

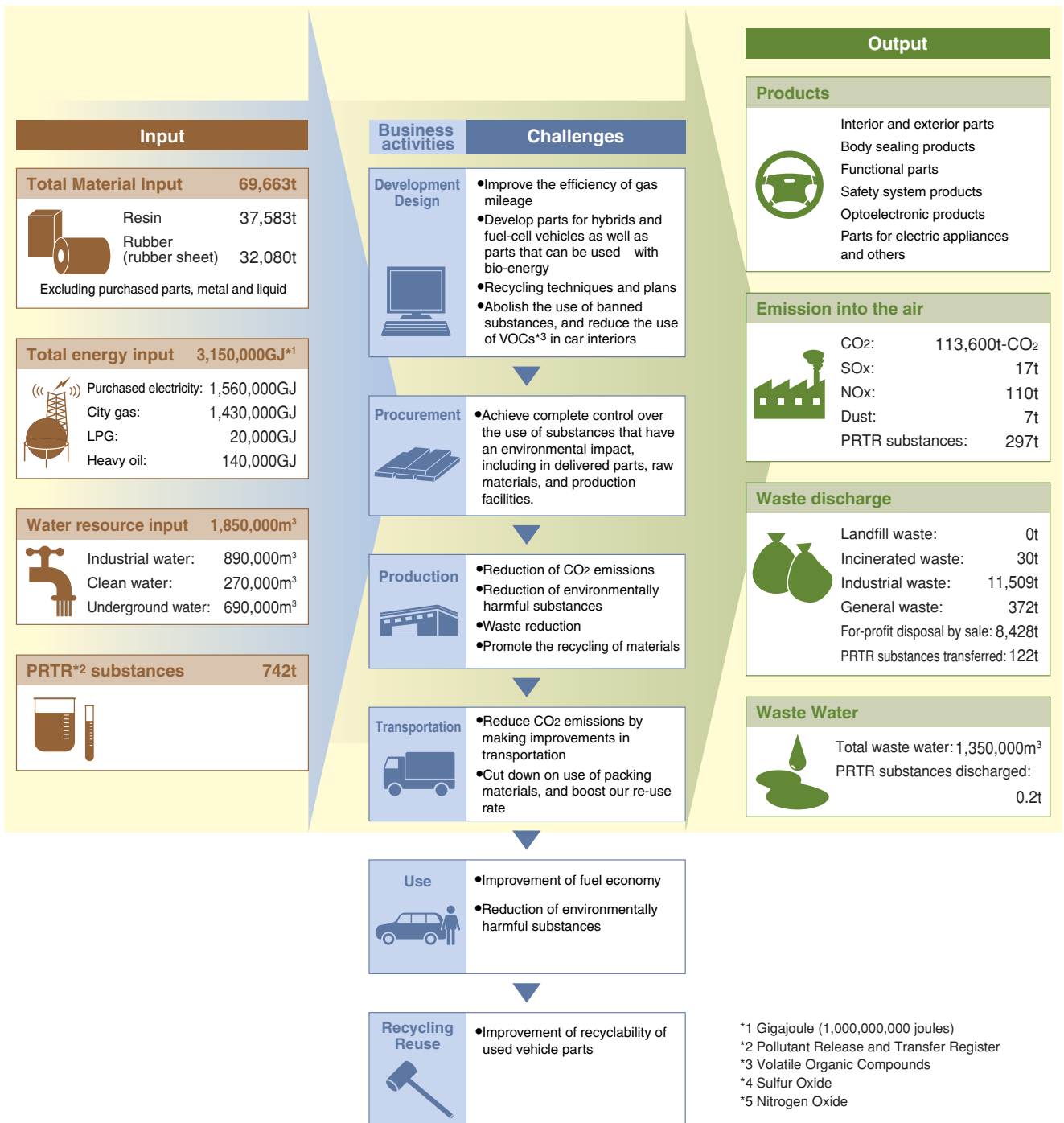
Material Balance & Data

Material Balance & Data

Environmental Impact of Business Activities

By quantifying the resources and materials used (the input) and the burden on the environment due to emissions (the output), and by developing a comprehensive understanding of the effects on the environment, we are acting in a way that is designed to reduce the environmental impact of our business activities.

■ Resource input into business activities and its output to the environment in fiscal 2005



Data on Domestic Plants Environmental data for our main domestic plants is displayed here.

Haruhi Plant



1 Nagahata, Ochiai, Haruhi, Nishikasugai, Aichi, Japan 452-8564

Main Products

- Functional parts
- Body-sealing products

■ Air (Air Pollution Control Law, prefectural regulations, etc.)

Item measured		Regulation value	Result
Dust	Co-generation (gas)	0.05	0.029
	Boilers (gas)	150	51
NOx	Co-generation (gas)	600	108

■ Groundwater

Item measured		Regulation value	Result
Trichloroethylene		0.03	ND~0.004*
Cis-1.2-Dichloroethylene		0.04	ND~0.124*

* Please refer to page 33

■ No violations of laws, etc. ■ No complaints

■ PRTR Data

Substance name	Amount handled	Volume emitted			Volume moved		Volume recycled	Total removed (processed)	Total consumed (products)
		Into the air	Into bodies of water	Into the ground	Volume moved via sewers	Volume moved as waste			
Bis (2-ethylhexyl) adipate	1,765	0	0	0	0	265	0	1,500	
2-imidazolidin thionate	7,161	0	0	0	0	1,043	11	6,106	
N-cyclohexyl-2-benzothiazole sulfenic amide	11,920	0	0	0	0	1,809	76	10,035	
Thiram	12,537	0	0	0	0	677	0	11,860	
Di-n-butyl phthalate	4,557	0	0	0	0	684	0	3,873	
Bis (2-ethylhexyl) phthalate	12,265	0	0	0	0	1,814	9	10,442	

■ Water (Water Pollution Control Law, prefectural regulations, etc.)

Item measured	Regulation value	Result
pH	5.8~8.6	7.6
BOD (Biochemical Oxygen Demand)	25	4.4
SS	30	0.5
Oil content	5	ND
Total nitrogen	120	5.4
Total phosphorus	16	1.1
Thiram	0.06	ND
Fluorine	8	0.2

Inazawa Plant



1 komeyasakai, Kitajima, Inazawa, Aichi, Japan 492-8542

Main Products

- Interior and exterior parts
- Functional parts

■ Air (Air Pollution Control Law, prefectural regulations, etc.)

Item measured		Regulation value	Result
Dust	Co-generation (gas)	0.05	—
	Boilers (gas)	150	55
NOx	Co-generation (gas)	600	126

■ Groundwater

Item measured		Regulation value	Result
Trichloroethylene *1		0.03	ND~0.024*2
Cis-1.2-Dichloroethylene *1		0.04	ND~0.165*2

*1 Substances that have no record of being used. *2 Please refer to page 33

■ No violations of laws, etc. ■ No complaints

■ PRTR Data

Substance name	Amount handled	Volume emitted			Volume moved		Volume recycled	Total removed (processed)	Total consumed (products)
		Into the air	Into bodies of water	Into the ground	Volume moved via sewers	Volume moved as waste			
Ethylbenzene	5,675	4,736	0	0	0	578	90	271	
Xylene	19,530	16,454	0	0	0	1,937	285	855	
Chromium and trivalent chromium compounds	9,608	0	80	0	0	7,606	0	1,922	
Hexavalent chromium compounds	9,608	0	0	0	0	0	0	9,608	
Copper water-soluble salts (excluding complex salts)	4,795	0	48	0	0	3,596	0	1,151	
Toluene	53,482	43,862	0	0	0	6,396	806	2,418	
Nickel metals	60,080	0	0	0	0	0	0	60,080	
Nickel compounds	71,251	0	14	0	0	9,248	0	61,988	
Bis (2-ethylhexyl) phthalate	15,505	36	0	0	0	1,087	1	14,382	
Boric acid and its compounds	2,079	0	21	0	0	1,559	0	499	

■ Water (Water Pollution Control Law, prefectural regulations, etc.)

Item measured	Regulation value	Result
pH	5.8~8.6	7.1
BOD (Biochemical Oxygen Demand)	25	9.7
SS	30	5.8
Oil content	5	0.1
Oil content	120	11.7
Total phosphorus	16	1.0
Hexavalent chromium	0.5	0.005
Total chromium	2	0.02
Copper	1	0.08
Zinc	5	0.1
Fluorine	8	0.1
Boron	10	3.6

Data

Data on Domestic Plants

Bisai Plant



40 Higashishimoshiro, Meichi, Ichinomiya, Aichi, Japan 494-8502

Main Products

- Interior and exterior parts
- Safety system products

■ **Air** (Air Pollution Control Law, prefectural regulations, etc.)

Item measured		Regulation value	Result
Dust	Boilers (heavy oil)	0.3	0.007
	Boilers (gas)	0.05	ND
	Co-generation (gas)	0.05	0.005
NOx	Boilers (heavy oil)	180	74
	Boilers (gas)	150	64
	Co-generation (gas)	600	76

■ **Water** (Sewage Laws, prefectural regulations, etc.)

Item measured	Regulation value	Result
pH	5.7~8.7	7.2
BOD (Biochemical Oxygen Demand)	300	53.4
SS	300	16.2
Oil content	80	4.4

■ No violations of laws, etc. ■ No complaints

■ **PRTR Data**

Substance name	Amount handled	Volume emitted			Volume moved		Volume recycled	Total removed (processed)	Total consumed (products)
		Into the air	Into bodies of water	Into the ground	Volume moved via sewers	Volume moved as waste			
Ethylbenzene	10,854	8,959	0	0	0	1,138	189	0	568
Xylene	27,313	22,616	0	0	0	2,840	464	0	1,392
Toluene	80,212	63,850	0	0	0	10,190	1,360	0	4,812

Heiwacho Plant



710 Origuchi, Shimomiyake, Heiwa, Inazawa, Aichi, Japan 490-1312

Main Products

- Body-sealing products
- Functional parts
- Safety system products
- Optoelectronic products

■ **Air** (Air Pollution Control Law, prefectural regulations, etc.)

Item measured		Regulation value	Result
Dust	Boilers (heavy oil)	0.15	ND
	Boilers (gas)	0.05	ND
	Co-generation (gas)	0.05	0.013
NOx	Boilers (heavy oil)	140	77
	Boilers (gas)	120	48
	Co-generation (gas)	200	107

■ **Water** (Water Pollution Control Law, prefectural regulations, etc.)

Item measured	Regulation value	Result
pH	5~9	7.5
BOD (Biochemical Oxygen Demand)	600	55
SS	600	38
Oil content	30	1.6
Total nitrogen	240	15.4
Total phosphorus	32	1.3
Fluorine	8	ND

■ No violations of laws, etc. ■ No complaints

■ **PRTR Data**

Substance name	Amount handled	Volume emitted			Volume moved		Volume recycled	Total removed (processed)	Total consumed (products)
		Into the air	Into bodies of water	Into the ground	Volume moved via sewers	Volume moved as waste			
2-aminoethanol	37,892	3	0	0	76	37,813	0	0	0
Ethylbenzene	7,717	6,926	0	0	0	782	2	0	7
Xylene	11,018	9,993	0	0	0	1,014	3	0	8
Toluene	11,069	9,996	0	0	0	1,032	10	0	30

Morimachi Plant



1310-128 Mutsumi,
Mori, Shuchi, Shizuoka,
Japan 437-0213

Main Products

- Body-sealing products
- Functional parts

■ Air (Air Pollution Control Law, prefectural regulations, etc.)

Item measured		Regulation value	Result
Dust	Boilers (heavy oil)	0.25	ND
NOx	Boilers (heavy oil)	180	110

■ No violations of laws, etc. ■ No complaints

■ PRTR Data

Substance name	Amount handled	Volume emitted			Volume moved		Volume recycled	Total removed (processed)	Total consumed (products)
		Into the air	Into bodies of water	Into the ground	Volume moved via sewers	Volume moved as waste			
Antimony and its compounds	6,598	0	0	0	0	330	66	0	6,202
2-imidazolidin thionate	17,517	0	0	0	0	701	701	0	16,116
Ethylbenzene	24,355	20,555	0	0	0	2,660	380	0	760
Xylene	35,163	29,677	0	0	0	3,840	549	0	1,097
N-cyclohexyl-2-benzothiazole sulfenic amide	17,671	0	0	0	0	707	707	0	16,258
Toluene	22,385	0	0	0	0	1,209	0	0	21,176
1,3,5-trimethylbenzene	2,456	2,073	0	0	0	269	38	0	77
Toluene	77,591	54,683	0	0	0	16,036	2,291	0	4,582
Bis zinc (N,N-dimethyldithiocarbamic acid)	11,164	0	0	0	0	447	447	0	10,271
Di-n-butyl phthalate	26,057	0	0	0	0	1,303	261	0	24,493
Bis (2-ethylhexyl) phthalate	8,258	0	0	0	0	355	52	0	7,850
Phthalic anhydride	1,579	0	0	0	0	73	15	0	1,491

■ Water (Water Pollution Control Law, prefectural regulations, etc.)

Item measured	Regulation value	Result
pH	5.8~8.5	7.6
BOD (Biochemical Oxygen Demand)	25	4.9
SS	50	7.9
Oil content	5	0.5
Thiram	0.06	0.005
Fluorine	8	0.2
Zinc	0.5	0.2

Kitakyushu Plant

2142-1 Horaoka Maeda,
Hachimamigashi,
Fukuoka, 805-0058

Main Products

- Body-sealing products
- Safety system products

■ PRTR Data

Substance name	Amount handled	Volume emitted			Volume moved		Volume recycled	Total removed (processed)	Total consumed (products)
		Into the air	Into bodies of water	Into the ground	Volume moved via sewers	Volume moved as waste			
Toluene	3,190	2,202	0	0	0	988	0	0	0

The former Nagoya plant.

1-23-13 Kikui, Nishi,
Nagoya, Aichi, Japan
451-0044

■ Soil

Item measured	Regulation value	Result
Trichloroethylene	0.03	ND*
Cis-1,2-Dichloroethylene	0.04	ND*

* Refer to p33 (Purification Policy Completion: in July 2006)

■ Groundwater

Item measured	Regulation value	Result
Cis-1,2-Dichloroethylene	0.04	ND~0.014*

* Refer to p33

[Period] • April, 2006 to March, 2007

[Air] • Units are as follows: NOx = ppm, PM (particulate matter) = mg/Nm³; • ND: below the minimum determination limit (not detected);
• Values shown in the results column are averages of the results of the measurements.

[Water] • Units are all in mg/L except for pH • pH: hydrogen ion concentration; • BOD: Biochemical Oxygen Demand; • SS: concentration of suspended solids in water;
• ND: below the minimum determination limit (not detected); • Values shown in the results column are averages of the results of the measurements.

[Soil] • Units are all in mg/L; • ND: below the minimum determination limit (not detected).

[Groundwater] • Units are all in mg/L; • ND: below the minimum determination limit (not detected).

[PRTR* Data] • Units are in kg; * Values less than 1kg are rounded up if >0.5 and down if <0.5; there are some cases in which values for total volume and volume handled are not in agreement.

* Pollutant Release and Transfer Register (the registration system monitoring emissions of substances that pollute the environment & moves/transfers of them)