

# Environmental Data

[ Period ] • April, 2008 to March, 2009

[ Air ] • Units are as follows: NOx = ppm, PM (particulate matter) = mg/Nm<sup>3</sup> • ND: below the minimum determination limit (not detected)  
• Values shown in the results column are averages of the results of the measurements.

[ Water ] • Units are all in mg/L except for pH • pH: hydrogen ion concentration • BOD: Biochemical Oxygen Demand • SS: concentration of suspended solids in water  
• ND: below the minimum determination limit (not detected) • Values shown in the results column are averages of the results of the measurements.

[ Groundwater ] • Units are all in mg/L • ND: below the minimum determination limit (not detected).

[ PRTR\* Data ] • Units are in kg \*Values less than 1kg are rounded up if ≥0.5 and down if 0.5. There are some cases in which values for total volume and volume handled are not in agreement.

\*Pollutant Release and Transfer Register (the registration system monitoring emissions of substances that pollute the environment and moves/transfers of them)

## Data on Main Domestic Plants

### Haruhi Plant

1 Nagahata, Ochiai,  
Haruhi, Nishikasugai,  
Aichi, Japan 452-8564

**Main Products**

• Functional parts

■ **Air (Air Pollution Control Law, prefectural regulations, etc.)**

Item measured		Regulation value	Result
Dust	Co-generation (gas)	0.05	0.022
	Boilers (gas)	150	51
NOx	Co-generation (gas)	600	55

■ **Groundwater**

Item measured	Environmental Standard	Result
Trichloroethylene	0.03	ND
Cis-1,2-Dichloroethylene	0.04	ND~0.08*

\*Refer to Toyoda Gosei Report P.37

■ **No violations of laws, etc.** ■ **No complaints**

■ **PRTR Data**

Substance name	Amount handled	Volume emitted			Volume moved		Volume recycled	Total removed (processed)	Total consumed (products)
		Into the air	Into bodies of water	Into the ground	Volume moved via sewers	Volume moved as waste			
Bis (2-ethylhexyl) adipate	1,032	0	0	0	0	155	0	0	878
2-imidazolidin thionate	5,505	0	0	0	0	799	10	0	4,696
N-cyclohexyl-2-benzothiazole sulfenic amide	7,207	0	0	0	0	1,050	53	0	6,104
Thiram	9,409	0	0	0	0	508	0	0	8,901
Di-n-butyl phthalate	2,772	0	0	0	0	416	0	0	2,356
Bis (2-ethylhexyl) phthalate	5,405	0	0	0	0	792	7	0	4,606

■ **Water (Water Pollution Control Law, prefectural regulations, etc.)**

Item measured	Regulation value	Result
pH	5.8~8.6	7.5
BOD (Biochemical Oxygen Demand)	25	3.9
SS	30	0.9
Oil content	5	ND
Total nitrogen	120	1.4
Total phosphorus	16	0.6
Thiram	0.06	ND
Fluorine	8	0.2

### Morimachi Plant

1310-128 Mutsumi,  
Mori, Shuchi,  
Shizuoka, Japan  
437-0213

**Main Products**

• Body-sealing products  
• Functional parts

■ **Air (Air Pollution Control Law, prefectural regulations, etc.)**

Item measured		Regulation value	Result
Dust	Boilers (heavy oil)	0.25	0.02
	Boilers (heavy oil)	180	88

■ **No violations of laws, etc.** ■ **No complaints**

■ **PRTR Data**

Substance name	Amount handled	Volume emitted			Volume moved		Volume recycled	Total removed (processed)	Total consumed (products)
		Into the air	Into bodies of water	Into the ground	Volume moved via sewers	Volume moved as waste			
Antimony and its compounds	6,598	0	0	0	0	330	66	0	6,202
2-imidazolidin thionate	11,575	0	0	0	0	463	463	0	10,649
Ethylbenzene	18,603	13,978	0	0	0	3,723	225	0	676
Xylene	21,515	16,177	0	0	0	4,333	251	0	753
N-cyclohexyl-2-benzothiazole sulfenic amide	11,801	0	0	0	0	472	472	0	10,857
Thiuram	20,309	0	0	0	0	1,097	0	0	19,212
1,3,5-trimethylbenzene	1,563	1,174	0	0	0	313	19	0	57
Toluene	59,698	37,752	0	0	0	19,446	1,227	0	1,273
Bis zinc (N,N-dimethyldithiocarbamic acid)	6,673	0	0	0	0	267	267	0	6,139
Di-n-butyl phthalate	21,186	0	0	0	0	1,059	212	0	19,915
Bis (2-ethylhexyl) phthalate	4,850	0	0	0	0	169	35	0	4,647
Phthalic anhydride	1,321	0	0	0	0	61	12	0	1,247

■ **Water (Water Pollution Control Law, prefectural regulations, etc.)**

Item measured	Regulation value	Result
pH	5.8~8.5	7.5
BOD (Biochemical Oxygen Demand)	25	8.0
SS	50	5.4
Oil content	5	0.5
Thiram	0.06	0.005
Fluorine	8	0.2
Zinc	0.5	0.2

## Heiwacho Plant

710 Origuchi,  
Shimomiyake, Heiwa,  
Inazawa, Aichi, Japan  
490-1312

### Main Products

- Body-sealing products
- Functional parts
- Safety system products
- Optoelectronic products

### ■ Air (Air Pollution Control Law, prefectural regulations, etc.)

Item measured		Regulation value	Result
Dust	Boilers (heavy oil)	0.15	ND
	Boilers (gas)	0.05	ND
	Co-generation (gas)	0.05	0.001
NOx	Boilers (heavy oil)	140	76
	Boilers (gas)	120	62
	Co-generation (gas)	200	110

### ■ Water (Sewerage Law, prefectural regulations, etc.)

Item measured	Regulation value	Result
pH	5~9	7.1
BOD (Biochemical Oxygen Demand)	600	28
SS	600	19
Oil content	30	0.1
Total nitrogen	240	7.9
Total phosphorus	32	0.5
Fluorine	8	0.3

■ No violations of laws, etc. ■ No complaints

### ■ PRTR Data

Substance name	Amount handled	Volume emitted			Volume moved		Volume recycled	Total removed (processed)	Total consumed (products)
		Into the air	Into bodies of water	Into the ground	Volume moved via sewers	Volume moved as waste			
2-aminoethanol	53,672	5	0	0	107	53,559	0	0	0
Ethylbenzene	7,297	5,929	0	0	0	913	114	0	341
Xylene	9,312	7,560	0	0	0	1,163	147	0	442
Toluene	10,487	8,502	0	0	0	1,305	170	0	510

## Inazawa Plant

1 Komeyasakai,  
Kitajima, Inazawa,  
Aichi, Japan  
492-8542

### Main Products

- Interior and exterior parts
- Functional parts

### ■ Air (Air Pollution Control Law, prefectural regulations, etc.)

Item measured		Regulation value	Result
NOx	Boilers (gas)	150	58
	Co-generation (gas)	600	175

### ■ Groundwater

Item measured	Environmental Standard	Result
Trichloroethylene* <sup>1</sup>	0.03	ND~0.003* <sup>2</sup>
Cis-1,2-Dichloroethylene* <sup>1</sup>	0.04	ND~0.074* <sup>2</sup>

\*1 Substances that have no record of being used. \*2 Refer to Toyoda Gosei Report P.37

■ No violations of laws, etc. ■ No complaints

### ■ Water (Water Pollution Control Law, prefectural regulations, etc.)

Item measured	Regulation value	Result
pH	5.8~8.6	7.2
BOD (Biochemical Oxygen Demand)	25	6.9
SS	30	5.2
Oil content	5	ND
Total nitrogen	120	11.8
Total phosphorus	16	1.2
Hexavalent chromium	0.5	ND
Total chromium	2	0.07
Copper	1	0.17
Zinc	5	0.14
Fluorine	8	0.2
Boron	10	4.3

### ■ PRTR Data

Substance name	Amount handled	Volume emitted			Volume moved		Volume recycled	Total removed (processed)	Total consumed (products)
		Into the air	Into bodies of water	Into the ground	Volume moved via sewers	Volume moved as waste			
Ethylbenzene	7,173	5,738	0	0	0	861	143	0	430
Xylene	12,805	10,240	0	0	0	1,540	256	0	768
Chromium and trivalent chromium compounds	8,575	0	69	0	0	6,792	0	0	1,715
Hexavalent chromium compounds	8,575	0	0	0	0	0	0	8,575	0
Copper water-soluble salts (excluding complex salts)	4,550	0	46	0	0	3,413	0	0	1,092
Toluene	49,250	39,293	0	0	0	6,017	1,002	0	2,938
Nickel metals	79,780	0	0	0	0	0	0	79,780	0
Nickel compounds	85,260	0	17	0	0	11,067	0	0	74,177
Bis (2-ethylhexyl) phthalate	5,487	8	0	0	0	385	0	0	5,094
Boric acid and its compounds	1,294	0	13	0	0	970	0	0	310

# Environmental Data

【 Period 】 • April, 2008 to March, 2009

【 Air 】 • Units are as follows: NOx = ppm, PM (particulate matter) = mg/Nm<sup>3</sup> • ND: below the minimum determination limit (not detected)  
• Values shown in the results column are averages of the results of the measurements.

【 Water 】 • Units are all in mg/L except for pH • pH: hydrogen ion concentration • BOD: Biochemical Oxygen Demand • SS: concentration of suspended solids in water  
• ND: below the minimum determination limit (not detected) • Values shown in the results column are averages of the results of the measurements.

【 Groundwater 】 • Units are all in mg/L • ND: below the minimum determination limit (not detected).

【 PRTR\* Data 】 • Units are in kg \*Values less than 1kg are rounded up if ≥0.5 and down if 0.5. There are some cases in which values for total volume and volume handled are not in agreement.

\*Pollutant Release and Transfer Register (the registration system monitoring emissions of substances that pollute the environment and moves/transfers of them)

## Bisai Plant

40 Higashishimoshiro,  
Meichi, Ichinomiya,  
Aichi, Japan  
494-8502

### Main Products

• Interior and exterior parts  
• Safety system products

### ■ Air (Air Pollution Control Law, prefectural regulations, etc.)

Item measured		Regulation value	Result
Dust	Boilers (heavy oil)	0.3	0.004
	Boilers (gas)	0.05	0.003
	Co-generation (gas)	0.05	ND
NOx	Boilers (heavy oil)	180	78
	Boilers (gas)	150	67
	Co-generation (gas)	600	110

### ■ Water (Sewerage Law, prefectural regulations, etc.)

Item measured	Regulation value	Result
pH	5.7~8.7	6.9
BOD (Biochemical Oxygen Demand)	300	26.8
SS	300	6.3
Oil content	30	0.3

■ No violations of laws, etc. ■ No complaints

### ■ PRTR Data

Substance name	Amount handled	Volume emitted			Volume moved		Volume recycled	Total removed (processed)	Total consumed (products)
		Into the air	Into bodies of water	Into the ground	Volume moved via sewers	Volume moved as waste			
Ethylbenzene	14,204	11,361	0	0	0	1,706	284	0	852
Xylene	19,650	15,720	0	0	0	2,358	393	0	1,179
Toluene	62,590	50,108	0	0	0	7,491	1,248	0	3,743

## Seto Plant

141 Sosaku-cho,  
Seto, Aichi, Japan  
489-0843

### Main Products

• Interior and exterior parts

### ■ Air (Air Pollution Control Law, prefectural regulations, etc.)

Item measured		Regulation value	Result
Dust	Boilers (kerosene)	0.2	ND
NOx	Boilers (kerosene)	150	83

### ■ Water (Water Pollution Control Law, prefectural regulations, etc.)

Item measured	Regulation value	Result
pH	5.8~8.6	7.6
BOD (Biochemical Oxygen Demand)	20	1.6
SS	20	0.2
Total nitrogen	10	1.5
Total phosphorus	4	0.1

■ No violations of laws, etc. ■ No complaints

### ■ PRTR Data

Substance name	Amount handled	Volume emitted			Volume moved		Volume recycled	Total removed (processed)	Total consumed (products)
		Into the air	Into bodies of water	Into the ground	Volume moved via sewers	Volume moved as waste			
Ethylbenzene	1,064	855	0	0	0	124	21	0	64
Xylene	1,332	1,070	0	0	0	155	27	0	80
Toluene	2,634	2,116	0	0	0	307	53	0	158

## Kanagawa Plant

19-5 Suzukawa,  
Isehara, Kanagawa,  
Japan 259-1146

### Main Products

• Interior and exterior parts  
• Functional parts

### ■ PRTR Data

Substance name	Amount handled	Volume emitted			Volume moved		Volume recycled	Total removed (processed)	Total consumed (products)
		Into the air	Into bodies of water	Into the ground	Volume moved via sewers	Volume moved as waste			
Toluene	1,990	1,630	0	0	0	247	28	0	85

## Kitakyushu Plant

1-2 Kitahoraoka Maeda,  
Yahatahigashi,  
Kitakyushu, Fukuoka,  
Japan 805-0058

### Main Products

- Interior and exterior parts
- Body-sealing products
- Functional parts
- Safety system products

### ■PRTRデータ

Substance name	Amount handled	Volume emitted			Volume moved		Volume recycled	Total removed (processed)	Total consumed (products)
		Into the air	Into bodies of water	Into the ground	Volume moved via sewers	Volume moved as waste			
Xylene	1,279	1,011	0	0	0	166	26	0	77
Toluene	1,773	1,121	0	0	0	602	13	0	38

## Fukuoka Plant

2223-1 Kurahisa,  
Miyawaka, Fukuoka,  
Japan 823-0017

### Main Products

- Interior and exterior parts
- Functional parts
- Safety system products

### ■No violations of laws, etc. ■No complaints

### ■Water (Water Pollution Control Law, prefectural regulations, etc.)

Item measured	Regulation value	Result
pH	5.8~8.6	7.4
BOD (Biochemical Oxygen Demand)	10	1.0
SS	25	ND
Oil content	2	ND

### ■PRTR Data

Substance name	Amount handled	Volume emitted			Volume moved		Volume recycled	Total removed (processed)	Total consumed (products)
		Into the air	Into bodies of water	Into the ground	Volume moved via sewers	Volume moved as waste			
Xylene	1,708	1,372	0	0	0	199	34	0	103
Toluene	4,607	3,681	0	0	0	562	91	0	274

## Saga Plant

9966-9 Kawako,  
Wakaki, Takeo,  
Saga, Japan 843-0151

### Main Products

- Optoelectronic Products
- General Industry Products

### ■Air (Air Pollution Control Law, prefectural regulations, etc.)

Item measured	Regulation value	Result
Dust Boilers (kerosene)	0.1	0.001
NOx Boilers (kerosene)	150	42

### ■No violations of laws, etc. ■No complaints

### ■Water (Water Pollution Control Law, prefectural regulations, etc.)

Item measured	Regulation value	Result
pH	5.8~8.6	6.8
BOD (Biochemical Oxygen Demand)	20	9.1
SS	50	4.3
Oil content	5	0.4

### ■PRTR Data

Substance name	Amount handled	Volume emitted			Volume moved		Volume recycled	Total removed (processed)	Total consumed (products)
		Into the air	Into bodies of water	Into the ground	Volume moved via sewers	Volume moved as waste			
Xylene	2,066	1,656	0	0	0	245	41	0	124
Toluene	8,626	6,907	0	0	0	1,029	173	0	518

## The Former Nagoya Plant

1-23-13 Kikui, Nishi,  
Nagoya, Aichi, Japan  
451-0044

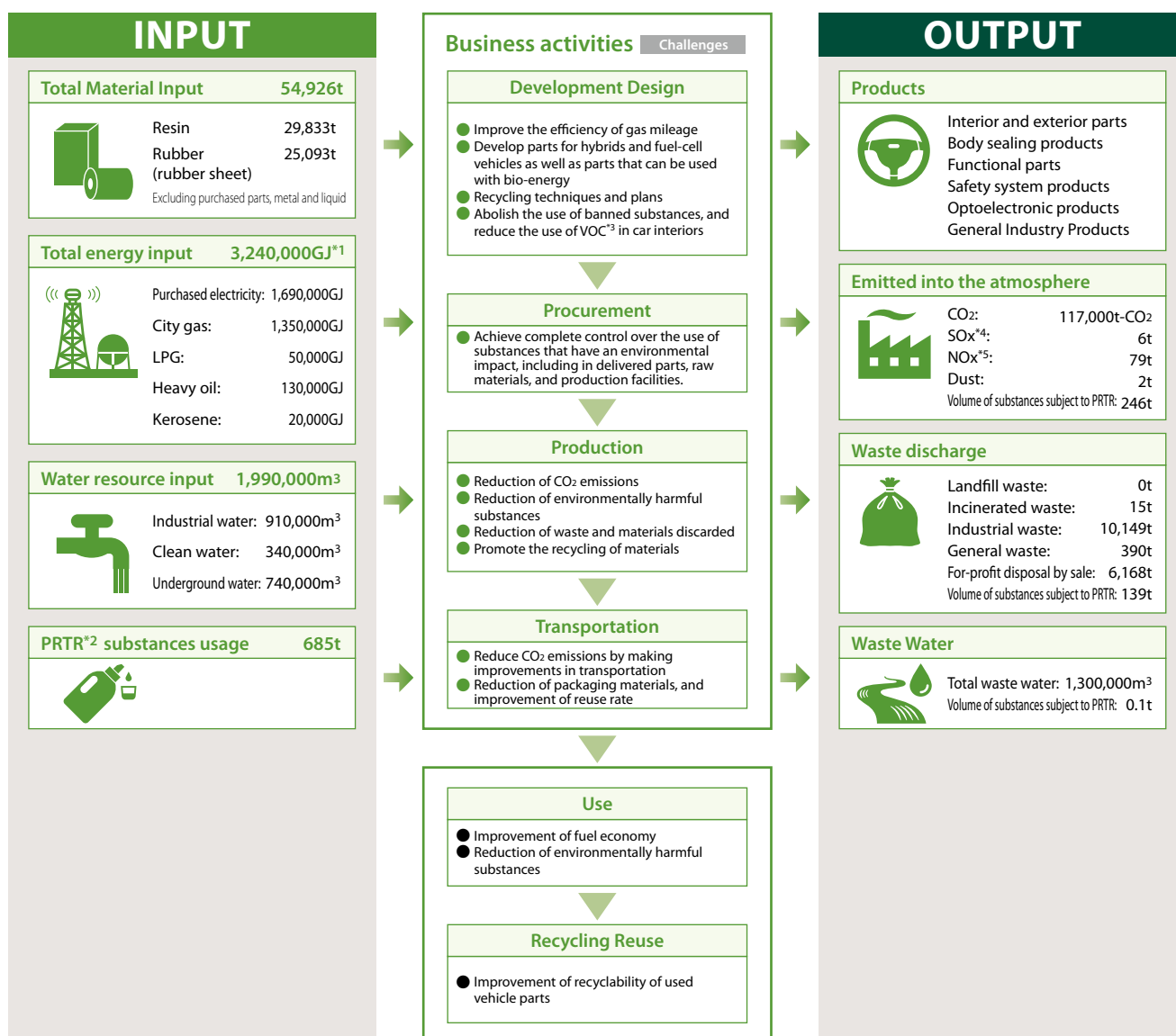
### ■Groundwater

Item measured	Regulation value	Result
Cis-1,2-Dichloroethylene	0.04	ND~0.009*

\*Refer to Toyoda Gosei Report P.37

# Environmental Data

## Resource Input and Output to the Environment in Business Activities in fiscal 2008



\*1 Gigajoule (1,000,000,000 joules)

\*2 Pollutant Release and Transfer Register

\*3 Volatile Organic Compounds \*4 Sulfur Oxide \*5 Nitrogen Oxide

## Environmental Reporting Guidelines (Fiscal 2007 Version) and the corresponding cross referenced pages

Guideline items	Main corresponding pages
<b>Basic items</b>	
Message from the president	P3-4
Basic requirements for the report	P1
Business conditions	P7-11
General overview of the environmental report	P3-4, 25-32, 37
Material balance in Toyota Gosei's business activities	Refer to our homepage
<b>Current situation of environmental administration such as environmental management</b>	
Current situation of environmental management	P25, 32-36
Current situation of compliance with environmental regulations	P37, Refer to our homepage
Environmental accounting information	P36
Current situation of supply chain management	P22, 32-34
Current situation of green purchasing/procurement	P22
Current situation with R&D of DfE etc. for new environmentally-friendly technologies	P28-32, 35
Current situation with environmentally-friendly transportation	P29-30
Current situation of the conservation of biodiversity and the sustainable use of biological resources	P36
Current situation with environmental communication	P21
Current situation of environment-related social contribution activities	P23
Current situation of products/services to reduce environmental impacts	P28-32, 35

Guideline items	Main corresponding pages
Environmental impact of Toyota Gosei's business activities and current situation with commitments for environmental impact reduction	
Total energy input and measures for its reduction	P28, Refer to our homepage
Total material input and measures for its reduction	P30, Refer to our homepage
Water resource input and measures for its reduction	Refer to our homepage
Quantity of recycled and reused materials within the operational area	P30, Refer to our homepage
Total production quantity and total product sales	P7-11, 39
Emission of greenhouse gases and measures for their reduction	P28, Refer to our homepage
Air pollution and life environment loads and measures for their reduction	P37, Refer to our homepage
Emission and transference of chemical substances and measures for their reduction	P31-32, 37, Refer to our homepage
Total waste discharge and total final waste disposal, and measures for their reduction	P30,37, Refer to our homepage
Total water discharge and measures for its reduction	P31, Refer to our homepage
<b>Current related situation between environmental consideration and management</b>	
Current related situation between environmental consideration and management	P25-27
<b>Current situation of Toyota Gosei's social activities</b>	
Current situation of Toyota Gosei's social activities	P12-24