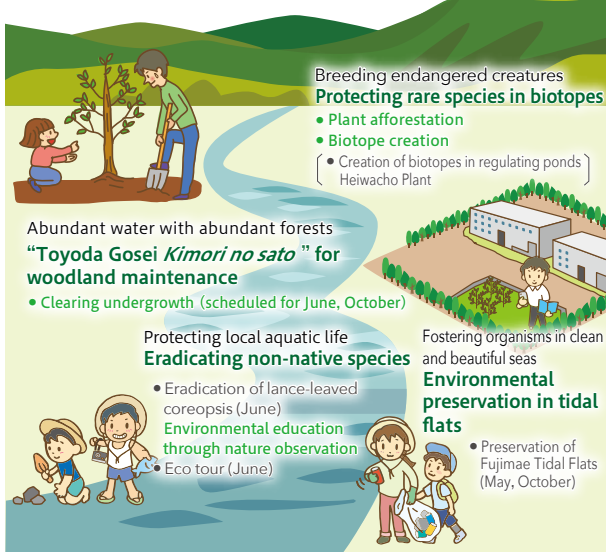


Working to Save Our Water, the Source of Life on Earth

Initiatives to protect the water used at our plants from its source (mountains) to its destination (sea)



Main Activities Related to Biodiversity

Woodland Maintenance

In FY2019 we cleared undergrowth and thinned trees in a forest in Minokamo, Gifu Prefecture, located on the upper reaches of the Kiso River to promote healthy woodlands.



Kimori no sato preservation work in Gifu Prefecture

Woodland maintenance participants in Gifu Prefecture

Biotope Creation on Company Grounds

We conducted a biological survey of the biotope completed in FY2018 at the Heiwacho Plant. Five themes and five species that are Aichi Prefecture Ecosystem Monitoring Indicator Species were confirmed, and living organisms have begun to gradually become established.



Biological survey at Heiwacho Plant

Biological survey participants

Activities to Eliminate Compliance and Environmental Violations and Complaints

Regular checks are conducted by expert departments and maintenance and management are carried out to ensure legal compliance and no environmental problems or complaints. Preventive activities such as environmental preservation project team activities are also conducted to combat risks. In addition, we

analyze problems that occur at other companies, inspect similar facilities including those at domestic and international Group companies, and take preventive measures. There were no occurrences of environmental abnormalities in FY2021.

Proper Disposal and Storage of PCB-Containing Equipment

The law stipulates that hazardous and persistent PCB (polychlorinated biphenyl) waste must be disposed of by the end of March 2027. We started outsourcing this disposal in FY2006 for the proper treatment of equipment that contains PCBs. By FY2021, 896 units had been treated. We will continue to process untreated low-concentration PCB waste at an early stage. Until that is completed, appropriate management based on the PCB Special Measures Law is done to prevent runoff and soil contamination.

Category	Type	No. of units treated	Treated weight
High concentration PCB waste material (PCB levels: >5,000 mg/kg)	Ballast, power capacitors, etc.	802 units	6.9 tons
Low concentration PCB waste material (PCB levels: 0.5-5,000 mg/kg)	Transformers, power capacitors, etc.	94 units	80.3 tons

Protecting Soil and Groundwater

We carefully monitor and treat soil and groundwater contamination from toxic substances such as trichloroethylene, which was formerly used in cleaning agents. We have established observation wells at each plant, and regularly confirm that there is no soil or groundwater pollution from toxic substances and oils.

Location	Target	Status of corrective measures
Haruhi Plant	Groundwater	Purification in progress (proactive treatment, as contamination from off-site sources is possible)
Inazawa Plant	Groundwater	Because substances we have no history of using have been detected, regular reports to the government contain results of measurements only *Results below reference values since 2010 (government reports concluded in FY2012)