



## Other important issues

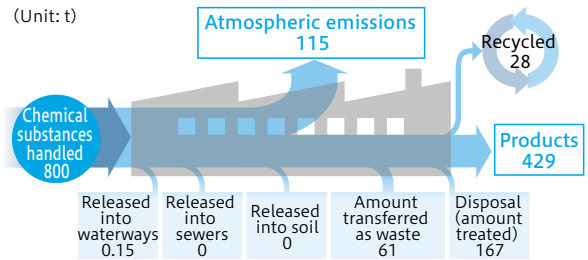
With awareness of environmental issues, every employee makes efforts to preserve the environment while recognizing the importance of protecting nature and biodiversity and contributing to the creation of environmentally-friendly societies.

### Reduced use of substances of concern

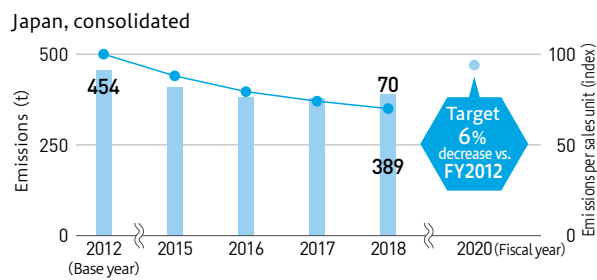
In production processes, we are switching to water-based paint and release agents, making painting lines more compact, improving coating efficiency, and making other efforts to reduce Pollutant Release and Transfer Register (PRTR) substances and volatile organic compounds (VOCs).

Through on-site visits, we also share information on cases in which VOCs were successfully decreased to promote reduction activities.

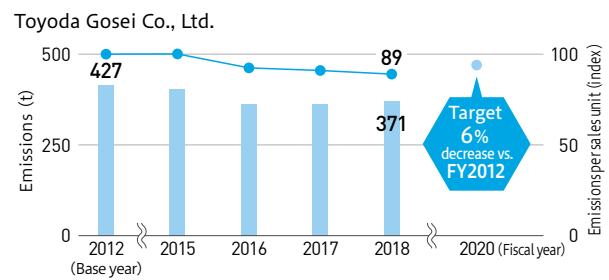
### Volumes and flow of emitted PRTR substances



### VOC emissions/emissions per sales unit (index)\*3



\* Emissions per sales unit (index) is a figure obtained taking FY2012 as 100



## Biodiversity

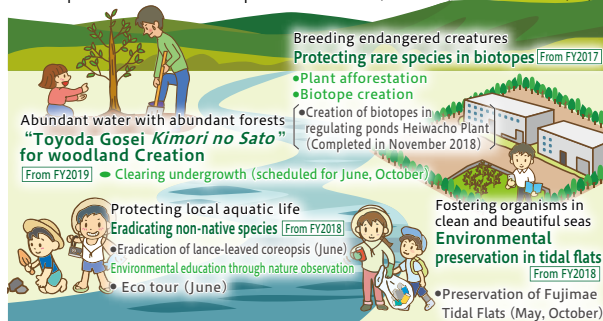
The Toyoda Gosei Group is working actively to protect nature and create environmentally-friendly societies through our plant afforestation project, biotope creation and environmental education.

### ● Mid-range plan for 2020

We have drafted a mid-range plan for biodiversity activities and are carrying out these activities with the slogan “Working to save our water, the source of life on earth.”

### Working to save our water, the source of life on earth

Efforts to protect the water used at our plants from its source (mountains) to its destination (sea)



We will further enhance these activities in coordination with the Toyota Group, government agencies, NPOs and others.

### ● Plant afforestation

Our plant afforestation project was begun in 2009, and we have since planted about 300,000 trees at 28 locations around the world. The seedlings planted in these activities are grown in the company.



TG Automotive Sealing Kentucky, LLC, / USA  
Tree planting in October 2018.

### ● Biotope creation

We are creating biotopes suited to each area around the world. To make it easier to secure the space and minimize costs, we have been creating biotopes in regulating ponds in coordination with government agencies and others.



Completion of biotope using a regulating pond\* (Heiwacho)

\* Basins are made in residential areas, industrial plants, and similar places. They function to limit local flooding by temporarily storing rainwater during torrential rains.