



Internal control systems

In accordance with the provisions of Japan's Companies Act, Toyoda Gosei has formulated a Basic Policy on Establishing Internal Controls. Under this policy, we are striving to ensure appropriate operations by establishing internal control systems, which help us deliberate important matters,

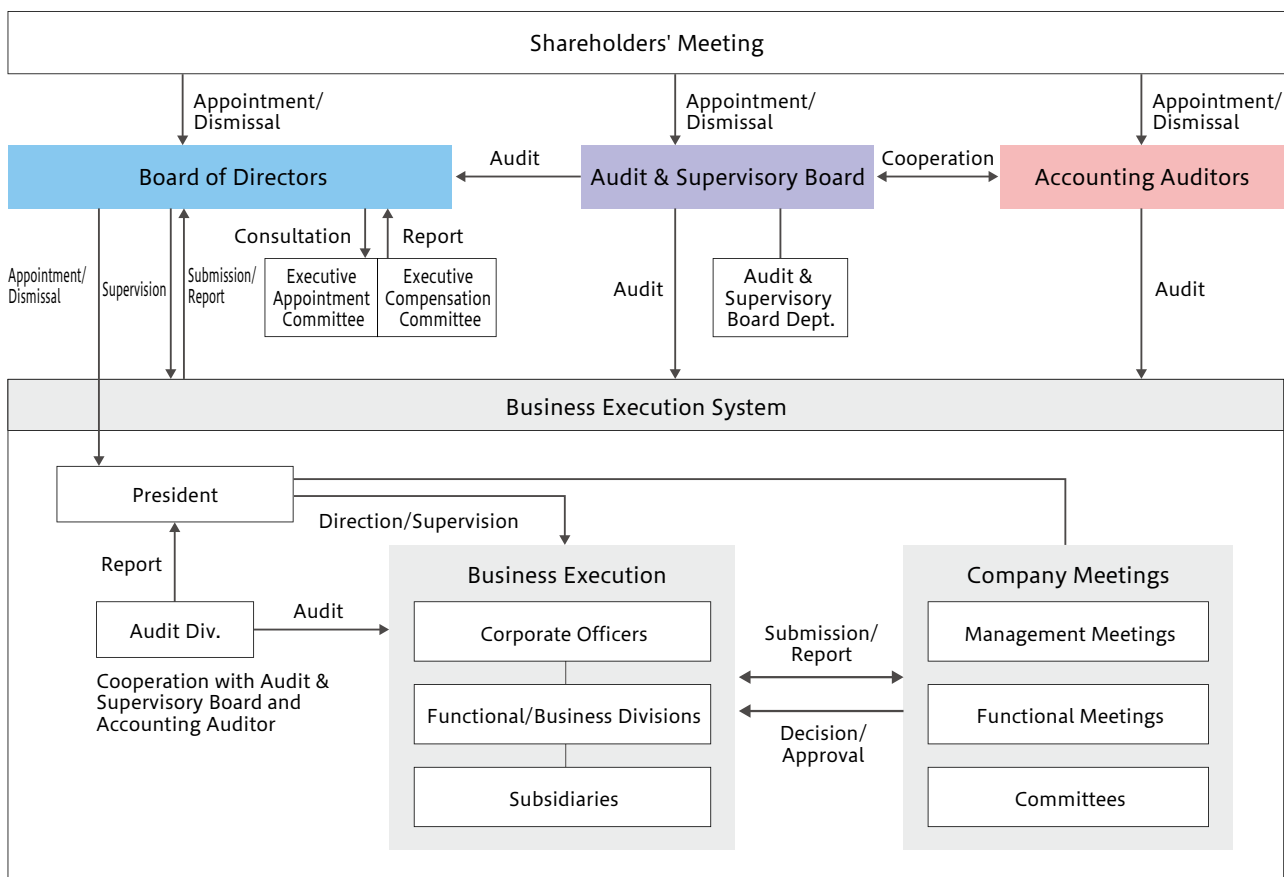
establish related rules and guidelines, and handle internal audits, compliance and risk management. Every year, the Board of Directors checks the status of establishment and operation of internal controls in an ongoing effort to improve and reinforce them.

Internal controls for the Toyoda Gosei Group

To cultivate a healthy internal control environment at Toyoda Gosei and its subsidiaries, all Group companies share its management philosophy. The Toyoda Gosei Group Charter for Business Ethics, a shared guideline for compliance, has also been instituted and expanded to subsidiaries. While respecting the independence of subsidiary management, we

receive regular business reports from subsidiaries and set up systems to confirm the propriety and legality of subsidiaries' businesses through advance approval reports. We also send non-executive directors and Audit & Supervisory Board members to key subsidiaries in a system to monitor and act as a check on their business execution.

Corporate governance system



Internal audits, Audit & Supervisory Board members' audits, and accounting audits

We have set up an Audit Division to handle internal audits. With the aims of achieving business objectives and preventing misconduct and mistakes, internal audits are conducted across the overall business (including audits of functional departments) based on an internal auditing plan approved by management at the beginning of each term.

The results of internal audits are reported to management, and audited departments are given recommendations for improvements based on the audit results. The effectiveness

of internal audits is increased by checking their improvement plans and results.

Each Audit & Supervisory Board member follows the auditing policy and audit plan established by the Audit & Supervisory Board when investigating the company and subsidiaries. They attend the meetings of important deliberative bodies and committees including the Board of Directors and management meetings, listen to reports on business from directors and others, inspect financial