



## Other key issues

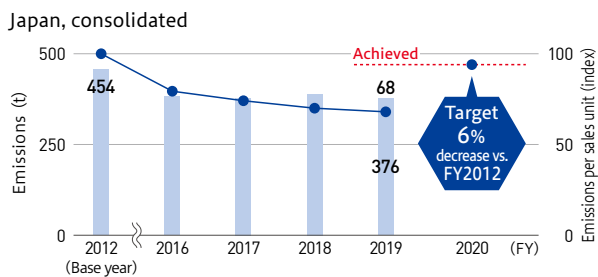
With awareness of environmental issues, every employee makes efforts to preserve the environment while recognizing the importance of protecting nature and biodiversity and contributing to the creation of environmentally-friendly societies.

### Reduced use of substances of concern

In production processes, we are switching to water-based paint and release agents, making painting lines more compact, improving coating efficiency, and making other efforts to reduce Pollutant Release and Transfer Register (PRTR) substances and volatile organic compounds (VOCs).

Through on-site visits, we also share information on cases in which VOCs were successfully decreased to promote reduction activities.

### VOC emissions, emissions per sales unit (index)\*



\*Emissions per sales unit (index) is a figure obtained taking FY2012 as 100

### Biodiversity

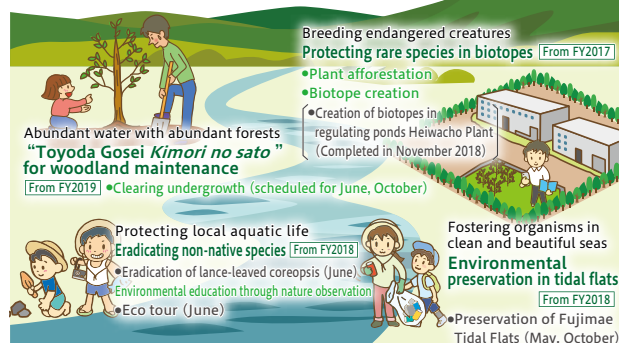
The Toyota Gosei Group is working actively to protect nature and create environmentally-friendly societies through our plant afforestation project, biotope creation and environmental education.

#### • Mid-range plan for 2020

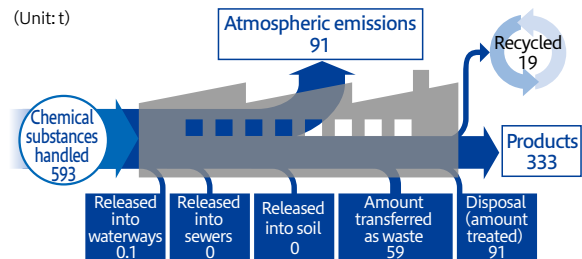
We have drafted a mid-range plan for biodiversity activities and are carrying out these activities with the slogan “Working to save our water, the source of life on earth.”

#### Working to save our water, the source of life on earth

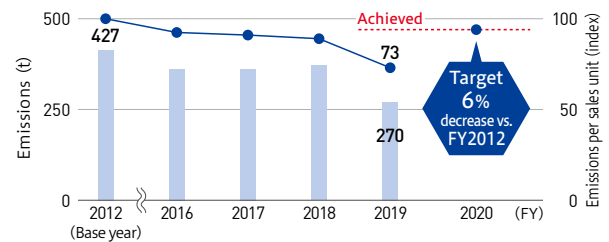
Efforts to protect the water used at our plants from its source (mountains) to its destination (sea)



### Volumes and flow of emitted PRTR substances



### Toyoda Gosei Co., Ltd.



We will further enhance these activities in coordination with the Toyota Group, government agencies, NPOs and others.

#### • Kimori no sato woodland maintenance

In FY2019 we cleared undergrowth and thinned trees in a forest in Minokamo, Gifu Prefecture, located on the upper reaches of the Kiso River to promote healthy woodlands.



#### • Biotope creation

We conducted a biological survey of the biotope completed in FY2018 at the Heiwacho Plant. Five themes and five species that are Aichi Prefecture Ecosystem Monitoring Indicator Species were confirmed, and living organisms have begun to gradually become established.

